


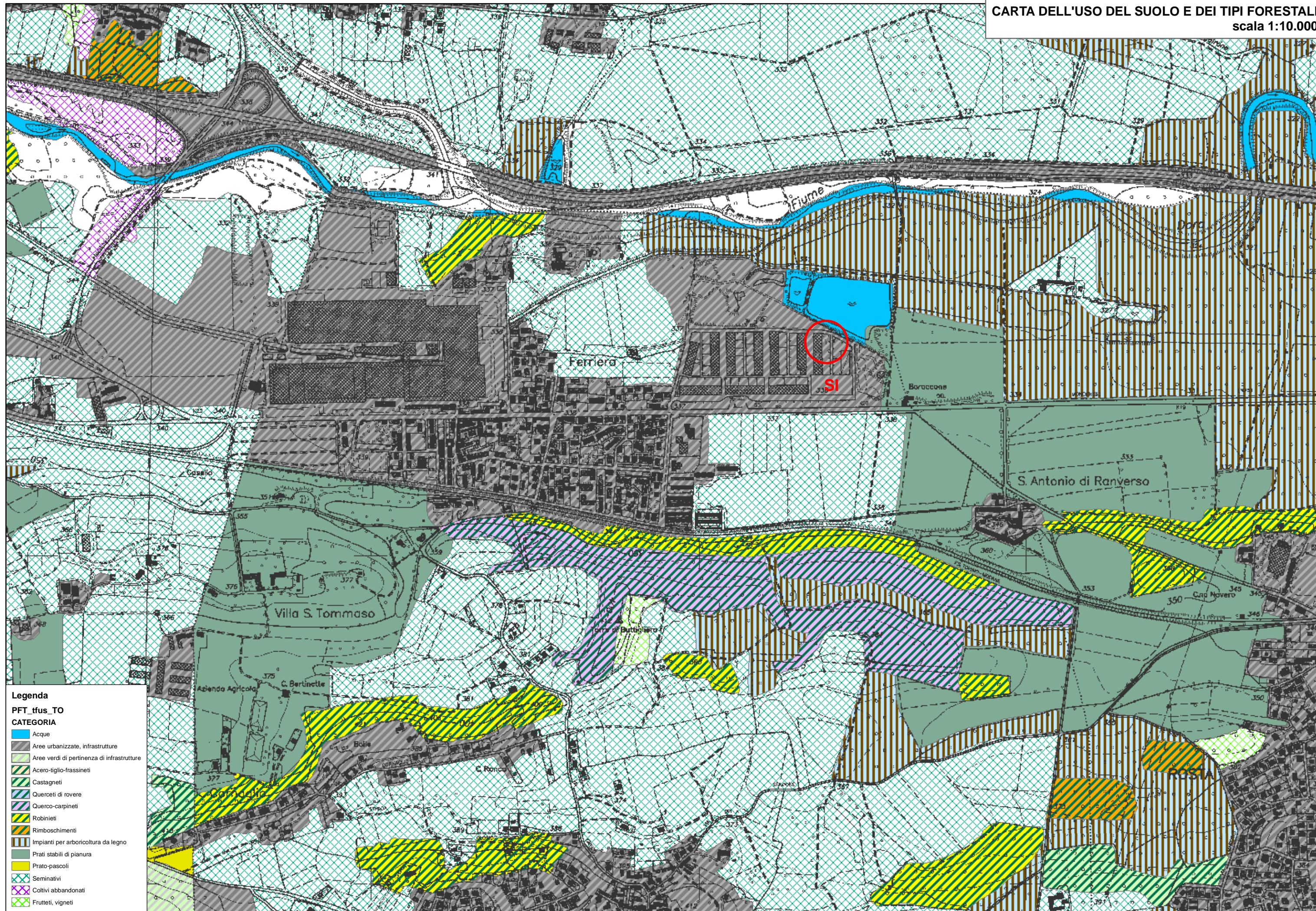


-  vincolo idrogeologico - R.D. 30/12/1923 n.3267
-  vincolo ex D.Lgs 42/2004 art. 142 c. c
-  galassini



Legenda

PFT_tfus_TO

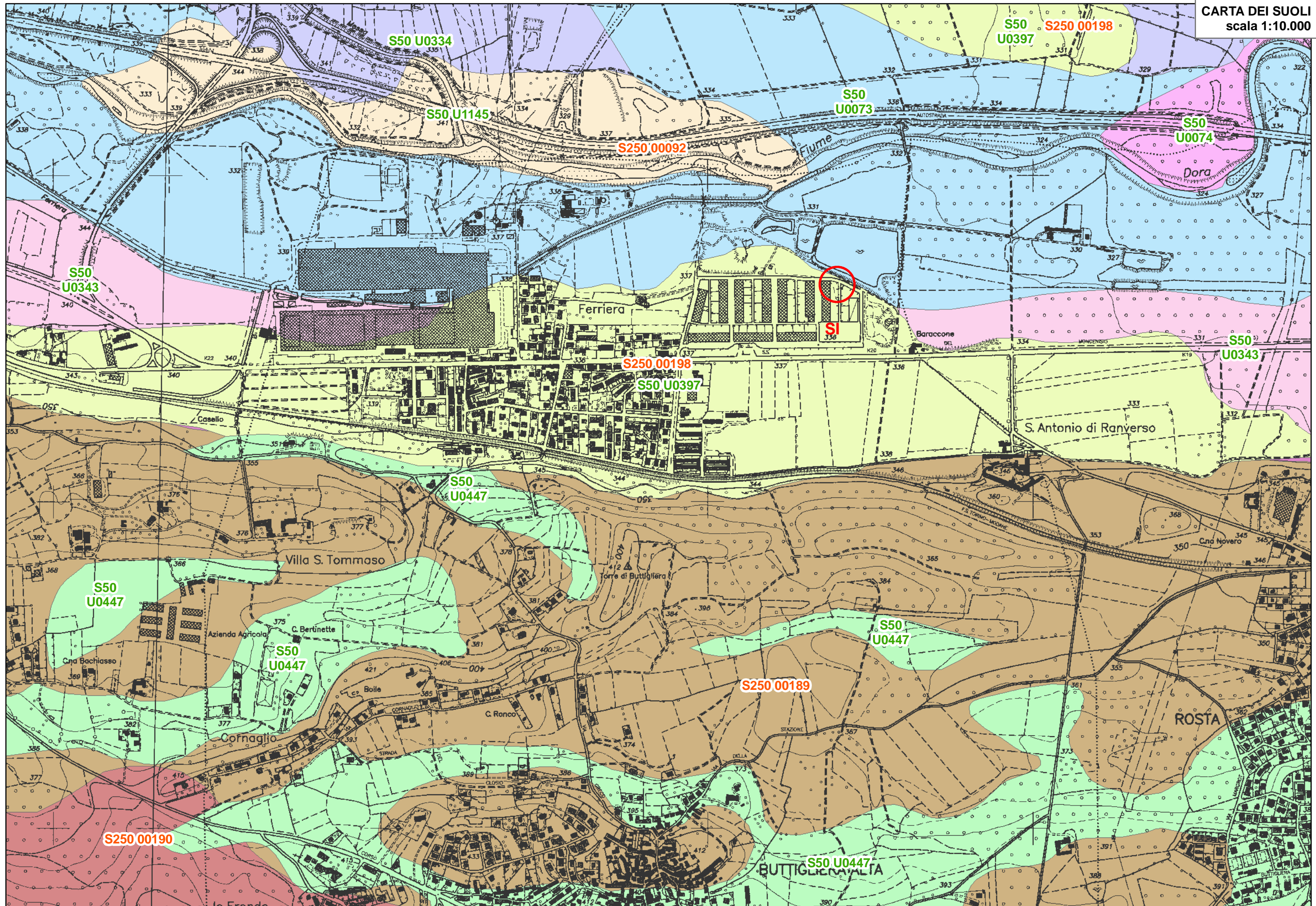
CATEGORIA

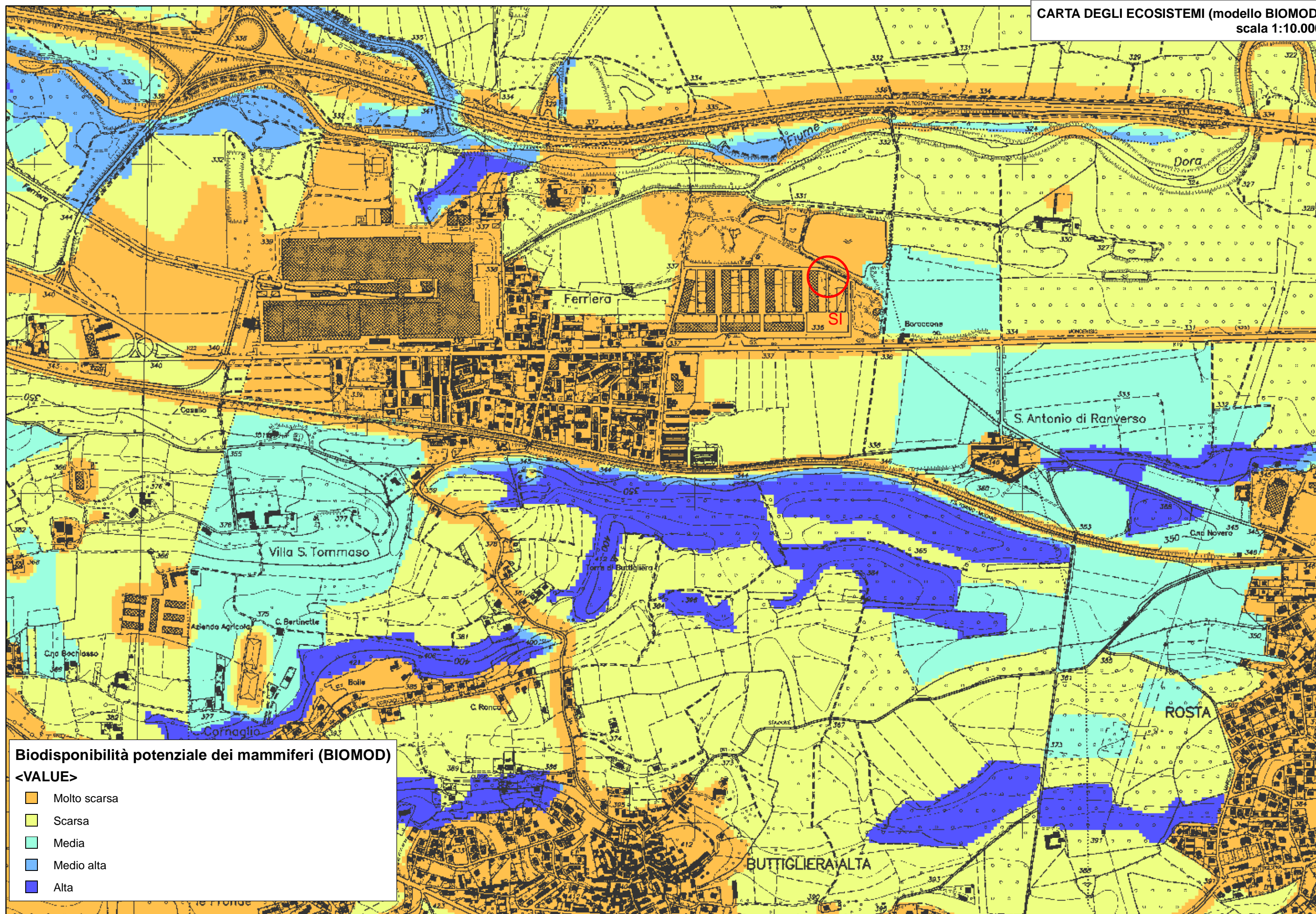
- Acque
- Aree urbanizzate, infrastrutture
- Aree verdi di pertinenza di infrastrutture
- Acero-tiglio-frassineti
- Castagneti
- Querceti di rovere
- Quercio-carpineti
- Robinieti
- Rimboschimenti
- Impianti per arboricoltura da legno
- Prati stabili di pianura
- Prato-pascoli
- Seminativi
- Coltivi abbandonati
- Frutteti, vigneti

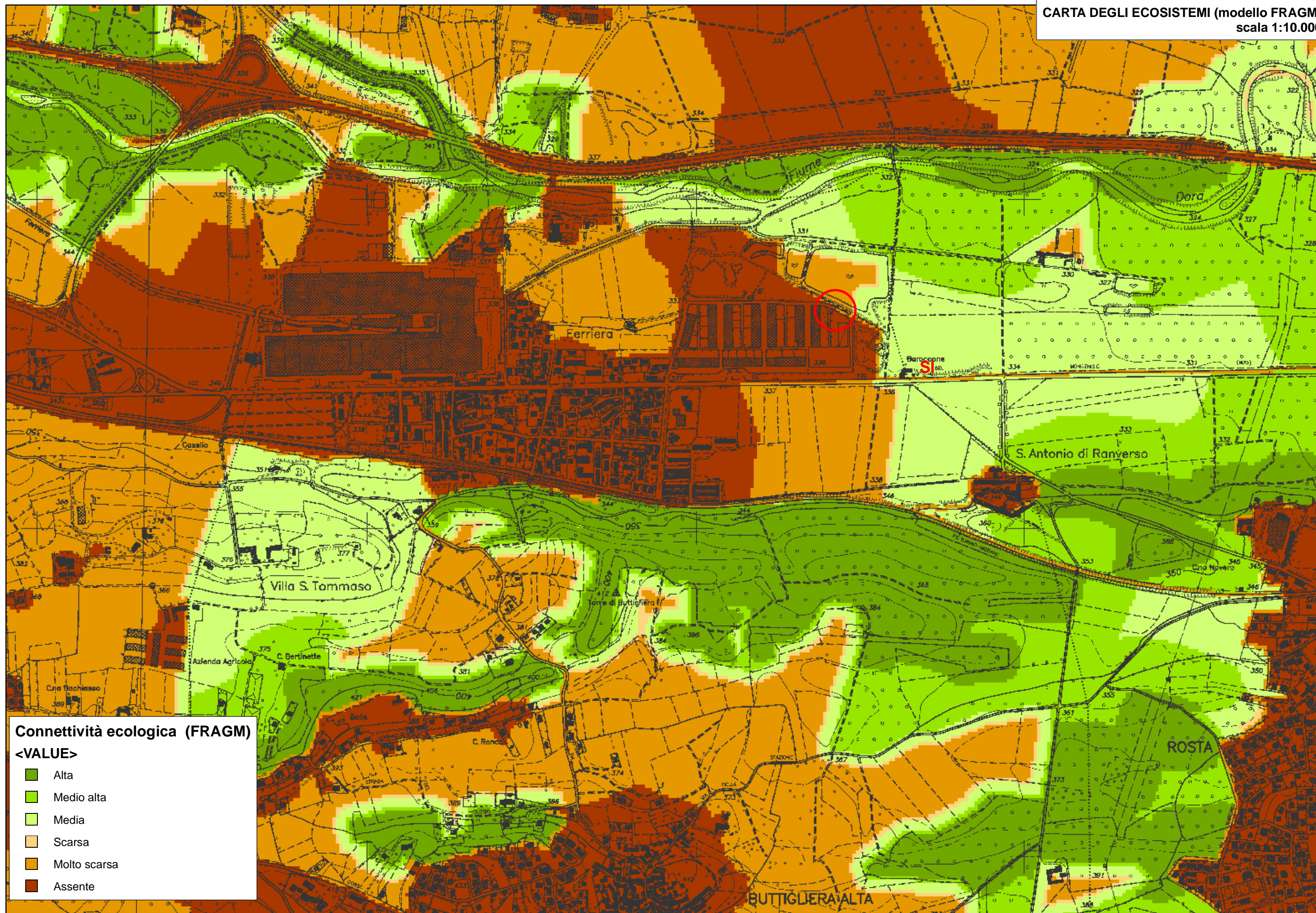
- CENTRO STORICO DI TIPO F4
- NUCLEO RURALE
- RITROVAMENTO ISOLATO

-  CAPPELLA
-  CHIESA
-  MONASTERO
-  PILONE

- ▲ TORRE
- ▲ VILLA
- ▲ VILLA CON PARCO







Connettività ecologica (FRAGM)

<VALUE>

- Alta
- Medio alta
- Media
- Scarsa
- Molto scarsa
- Assente

